

Cavendish Barn Four Tallington, Stamford, PE9 4FB

Set in a unique tucked away location with country views to the front, this modern three bedroom barn conversion is finished to a high standard throughout and is available from the start of September. The access to the property runs through and next to a working farm, comes with a stylish open plan living kitchen area, gallery landing and Main bedroom with en-suite.

The accommodation comprises: - Entrance hall, open plan living kitchen, pantry, study, utility, cloakroom, gallery landing, Main bedroom with en-suite, two further bedrooms and a bathroom.

To the outside is a south facing fenced garden with country views and two allocated parking spaces.

£2,000 PCM

The particulars are set out as a general outline only for the guidance of intended purchasers or lessees, and do not constitute, any part of a contract. Nothing in these particulars shall be deemed to be a statement that the property is in good structural condition or otherwise nor that any of the services, appliances, equipment or facilities are in good working order. Purchasers should satisfy themselves of this prior to purchasing.



- New barn conversion
  - Stylish open plan kitchen living space
  - Main bedroom with en-suite
  - Allocated parking space
  - Council Tax Band - TBC, EPC - B
- Available immediately
  - Three bedrooms
  - Gas fired central heating
  - Unique tucked away location with country views
  - Deposit - £2307 Holding Deposit - £461



ACCOMMODATION:

- Entrance Hall**

**Open Plan Living Kitchen Space**  
9.30m x 4.95m (30'6 x 16'3)

**Pantry**

**Study**  
3.12m x 3.35m (10'3 x 11')

**Cloakroom**  
1.73m x2.31m (5'8 x7'7)

**Landing**

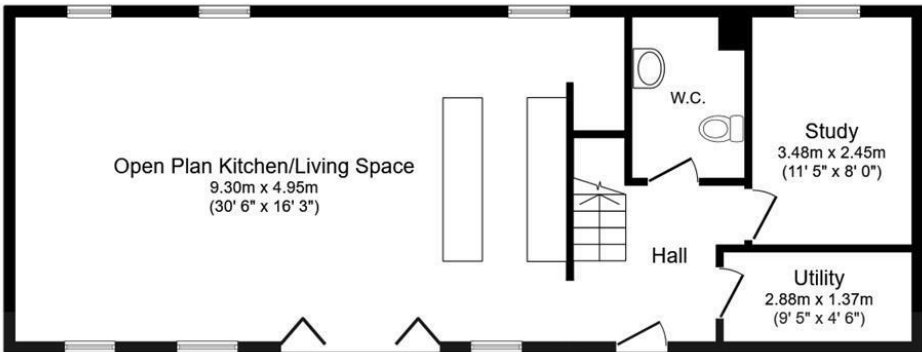
**Main Bedroom**  
5.16m x 3.10m (16'11 x 10'2 )

**En-suite**  
2.95m x 1.70m (9'8 x 5'7)
- Bedroom Two**  
3.66m x 2.72m (12' x 8'11)

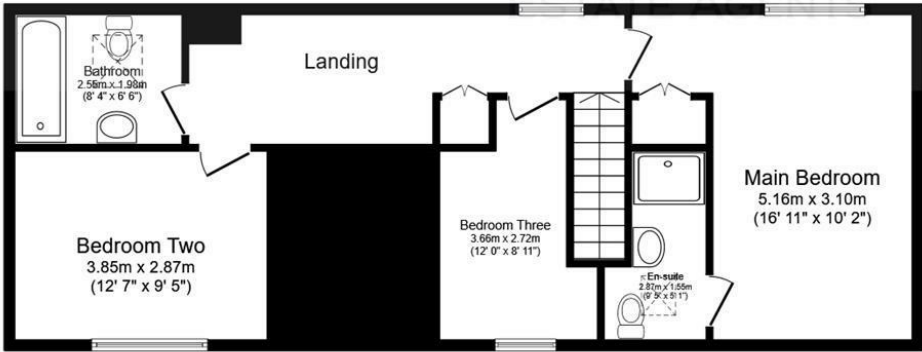
**Bedroom Three**  
3.53m x 2.74m (11'7 x 9')

**Bathroom**  
2.34m x 1.88m (7'8 x 6'2)

FLOOR PLAN:



Ground Floor



First Floor

This floor plan is for illustrative purposes only. It is not drawn to scale. Any measurements, floor areas (including any total floor area), openings and orientations are approximate. No details are guaranteed, they cannot be relied upon for any purpose and do not form any part of any agreement. No liability is taken for any error, omission or misstatement. A party must rely upon its own inspection(s). Powered by [www.Propertybox.io](http://www.Propertybox.io)